

# 2024

**OFF ROAD ACCESSORIES**



**TRACKER**  
**OFF ROAD**

# THE LOVE OF THE OUTDOORS: FROM OUR FATHERS' FATHERS TO OUR CHILDRENS' CHILDREN.

Those of us who fish, hunt, and love the outdoors think it's as natural as breathing in the morning air outside a tent or skimming across a lake in a bass boat at dawn. It clears your mind, it sets your compass, it makes you right with the world. Bass Pro Shops® and Cabela's were founded on this passion for the outdoors and the knowledge that every outdoor experience brings you closer to your place in the natural order of things. As time goes by, it becomes harder and harder for busy people to pass these outdoor passions and skills to their children. Each new generation is in danger of breaking the chain. We believe the more people who love the outdoors, the more people will care for the environment. That's why TRACKER has introduced a complete line of ATVs, Side-by-Side Vehicles, and Sport Carts at a breakthrough value: to give more people access to the outdoors we love. Those extra seats aren't just there for your dog and duck decoys, friend. They are for your buddies, your family, your neighbors, and your co-worker who never fished or hunted before. If we share our knowledge and passion for the outdoors with them, we pass along something more valuable than our knowledge. We pass along a deeper connection to the soul of the outdoors, a passion that changes every soul it touches.

**TRACKER**  
 **OFF ROAD**

**TRACKER**  
**OFF ROAD**



# BUILT FOR LOVE OF COUNTRY™

TRACKER  
OFF ROAD

TRACKER  
OFF ROAD

**TRACKER**  
OFF ROAD

**TRACKER**  
OFF ROAD.

# 2024 ACCESSORIES



# CONTENTS

## ATV

450 & 600 4-13

## SXS

800SX 14-31

800SX CREW

OX400/OX EV 32-35

UNIVERSAL 36-41

OIL CARE 42-44

PAST MODELS 45-72





**TRACKER**  
OFF ROAD

# 450 & 600







# PACKAGES

## 600 WINTER KIT (WITH WINCH) - 3436-125

Get ready for winter with this comprehensive plow package. Includes quick-attach, multi-position forged steel 66-in. plow blade with everything needed to install and operate. Electric hand warmers complete the kit for added comfort during the roughest snow-clearing jobs. *Remember to customize your Winter Kit with additional plow accessories found on page!*

**FITS '22-'24 600, 600EPS**



**ATV SPEEDPLOW  
STEEL PLOW BLADE  
- 66-IN.  
(2436-993)**



**PUSH FRAME  
ADAPTER  
(2436-884)**



**STANDARD PLOW NEXT  
GEN PUSH FRAME &  
MOUNT KIT (2436-534)**



**WINCH-INSTALL-  
VRX35-600 ATV  
(3436-115)**



**WARN VRX35 WINCH  
KIT  
(3436-114)**



**DELUXE HANDLEBAR/  
THUMB WARMERS  
(2436-881)**

## 600 WINTER KIT (NO WINCH) - 3436-132

This kit is similar to the comprehensive (3436-125) offering but does not include the winch or winch mounting components.

**FITS '22-'24 600, 600EPS, 600EPS LE**



**ATV 66-IN. BLADE  
SPEEDPLOW  
(2436-993)**



**PUSH FRAME ADAPTER  
(2436-884)**



**STANDARD PLOW NEXT GEN PUSH  
FRAME & MOUNT KIT (2436-534)**



**DELUXE HANDLEBAR/THUMB  
WARMERS (2436-881)**

## 450 WINTER KIT (WITH WINCH) - 3436-104

This kit is similar to the comprehensive (3436-125) offering but does not include the winch or winch mounting components.

FITS '21-24 450



ATV SPEEDPLOW, 53-IN STEEL BLADE  
(2436-991)



STANDARD PLOW NEXT GEN PUSH FRAME & MOUNT KIT  
(2436-534)



WINCH-INSTALL-VRX25-450 ATV  
(3436-106)  
  
WARN VRX45 WINCH KIT  
(3436-113)



DELUXE HANDLEBAR/THUMB WARMERS (2436-881)

## GARMIN CONNECTED PACKAGE PREMIUM - 3436-129 - US ONLY GARMIN CONNECTED PACKAGE STANDARD - 3436-156

The durable IP67 rated Garmin Tread navigation unit comes with preloaded maps, turn-by-turn trail navigation, path planning, and Group Ride tracking compatibility (up to 20 riders) with the Tread mobile app. Premium package features Group Ride Radio - includes voice communication via fist mic or compatible bluetooth helmet (sold separately) with other Group Ride Radio users.

FITS '22-'24 600, 600EPS, 600EPS LE



GARMIN TREAD PREMIUM GPS KIT  
(3441-555)



GPS INSTALL KIT  
(3436-133)

GARMIN TREAD STANDARD GPS KIT  
(3441-557)

## 600 BACKCOUNTRY KIT - 3436-127

Protection when braving the uncharted. Front and rear steel bumpers coated with textured black paint offer durable body protection. Cyrca M4 Recoil Hand Guards give maximum coverage for added driver protection.

FITS '22-'24 600, 600EPS



FRONT BUMPER  
(3436-123)



REAR BUMPER  
(3436-124)



HAND GUARDS  
(10006559)

\*No haggle no hassle™ National Price. Prices, package quantities, specifications and materials may change without notice. For more information, visit [TRACKEROFFROAD.COM](http://TRACKEROFFROAD.COM).

**WINCHES****600 WINCH KIT - 3436-238**

The WARN 3500lb capable winch comes with 50ft of 7/32-in. steel cable, roller fairlead, all-metal 1P68 protection, and a limited 3-year electrical warranty to back its robust clutch design based on 70+ years of WARN 4WD hub knowledge. The VRX smooth 3-stage planetary gear train is backed by a limited WARN lifetime warranty.

**FITS '22-'24 600, 600EPS**

PART #: 3436-238

**450 WINCH KIT - 3436-237**

The WARN 2500lb capable winch comes with 50ft of 3/16-in. steel cable, roller fairlead, all-metal 1P68 protection, and a limited 3-year electrical warranty to back its robust clutch design based on 70+ years of WARN 4WD hub knowledge. The VRX smooth 3-stage planetary gear train is backed by a limited WARN lifetime warranty.

**FITS '21-'24 450**

PART #: 3436-237

**WIRELESS REMOTE UPGRADE KIT - ALL VEHICLES**

Easy plug-and-play installation. 50t. operation radius. Automatic system shut-off.

**WORKS WITH ALL WARN VRX WINCHES**



PART #: 2436-110

**HAWSE FAIRLEAD**

Aluminum forged Hawse Fairlead is designed for use with synthetic winch rope. Reduces rope wear and features improved corrosion resistance.

**FITS '22-'24 600, 600EPS, 600EPS LE (Synthetic Rope Only)**



PART #: 2441-932

**PLOW ROLLER FAIRLEAD**

Plow roller fairlead with larger diameter bottom roller for reduced rope stress

**FITS '22-'24 600, 600EPS, 600EPS LE**



PART #: 2441-931

**ATV SYNTHETIC WINCH ROPE**

Upgrade your standard steel winch cable. With better fatigue resistance and efficient pulling at steep angles, the Spydura rope is an ideal upgrade for repetitive winching and snow plow operation.

Pair with Hawse Fairlead for standard operation. Pair with Plow Roller Fairlead when plowing.

**Fits '22-'24 600, 600EPS, 600EPS LE with VRX35 Winches Installed**



PART #: 0541-570

# FIND THE RIGHT PLOW FOR YOU

The SPEEDPlow lineup features a 5-position, quick-adjust blade that can be installed or removed from the plow mount in seconds.



## TRACKER 450

- 3436-237**    WARN VRX 25 Winch Kit\*
- 2436-534**    Standard Plow Next Gen Push Frame & Mount
- 2436-991**    53-in. Steel Plow Blade

\* Winch required to operate plow.



## TRACKER 600

- 3436-238**    WARN VRX 35 Winch Kit\*
- 3436-137**    Standard Plow Next Gen Push Frame & Mount
- 2436-293**    66-in. Steel Plow Blade

\* Winch required to operate plow.

## PLOW ACCESSORIES

### SPEEDPLOW STEEL WEAR BAR

Easy-install steel wear bars to keep your plow in optimal condition.

**All SPEEDPlow blades come standard with one wear bar pre-installed.**



- PART #: 2436-317                      **66-IN.**
- PART #: 2436-316                      **53-IN.**

### CURB FINDERS

Heavy-duty, powder-coated 0.25-in. stamped steel plate protects the plow from damage caused by contact with curbs. Curb finders are easy to install on any SPEEDPlow blade. Does not work with drift cutters or UHMW wearbar. Sold in pairs.



PART #: 2436-502

### DRIFT CUTTERS

Move and control more snow while making cleaner passes with drift cutters installed on your SPEEDPlow blade. Sold in pairs. Cannot be installed with Curb Finders.



PART #: 2436-276

### PLOW BLADE EDGE MARKERS

Increase visibility and know exactly where your blade edges are with these easy-install markers. Great when snow is piled high and light levels are low.



PART #: 2436-277

\*No haggle no hassle™ National Price. Prices, package quantities, specifications and materials may change without notice. For more information, visit [TRACKEROFFROAD.COM](http://TRACKEROFFROAD.COM).

## WINDSHIELDS

### WINGUARD 2 WINDSHIELD

The Windguard 2 offers premium rider protection. Optimized for trail riding, this windshield features an exclusive dust-management system, screen-printed graphics, and adjustable positions. Attach and remove in seconds - no tools required.

**FITS '22-'24 600, 600EPS, 600EPS LE**



PART #: 2436-987

## PROTECTION

### 450 REAR BUMPER

Custom-designed for protecting the rear frame, muffler, fenders, and taillights; the 450 rear bumper is constructed from sturdy 1.5-in dual-tube steel tubing. A must-have for the adventuring types.

**FITS '21 - '24 450**



PART #: 2436-507

### CYCRA M4 RECOIL HAND GUARDS

Maximum coverage for increased hand protection. Removable Shield Cover for vented or non-vented riding conditions. Patent Pending Recoil Technology allows handguards to swing out. 6061 T-6 Aluminum Mount Brackets for added strength. Complete Racer Pack includes: Shields, Brackets & Hardware

**FITS '21-'24 450**



PART #: 10006559

## COLD-WEATHER GEAR

### ATV TIRE CHAINS

Gives maximum traction on snow and ice. Made from hardened steel with a grippy V-bar design. Easy-attach, secure, solid fit. Two sizes available. Sold in pairs. For use on rear tires only.

**FITS '22-'24 600, 600EPS, 600EPS LE**  
**FITS '21-'24 450**



PART #: 0436-026 - Size B -

**Fits most 24-in. & 25-in. Rear Tires**

PART #: 0436-027 - Size C -

**Fits most 25-in. & 26-in. Rear Tires**

## HANDLEBAR MUFFS

Water and wind-resistant nylon outer. Easy-attach hook-and-loop fastener straps with an elastic grip strap. Sold in pairs.

**FITS '22-'24 600, 600EPS, 600EPS LE**

**FITS '21-'24 450**



PART #: 2436-990

## STANDARD HANDLEBAR/THUMB WARMERS

Offers all-day warmth to hands and thumbs. Easy-to-install kit with 3-position (high/low/off) toggle switch. Secure molded connectors and replacement grips. Requires Grip-It Glue (0441-510).

**FITS '22-'24 600, 600EPS, 600EPS LE**

**FITS '21-'24 450**



PART #: 3436-025

## DELUXE HANDLEBAR/THUMB WARMERS

All the features of the standard handlebar/thumb warmers plus a pod-mounted, 3-position rocker switch and easy-install wiring. Requires Grip-It Glue (0441-510).

**FITS '22-'24 600, 600EPS, 600EPS LE**

**FITS '21-'24 450**



PART #: 2436-881

## MIRRORS

### HANDLEBAR END MIRROR

Quick bar-end mounting on most ATVs. Does not interfere with hand movement. Vibration-free convex safety lens for ultra clear rearview vision. Sold individually.

**FITS '22-'24 600, 600EPS, 600EPS LE**

**FITS '21-'24 450**



PART #: 1436-507

### MIRROR

Compact, yet offers excellent rear view. Requires Mirror-Mounting Bracket (1436-700). NOTE: Will only work on 1 side.

**FITS '22-'24 600, 600EPS, 600EPS LE**

**FITS '21-'24 450**



PART #: 1436-702

## MIRROR-MOUNTING BRACKET

Use for mounting Mirror (1436-702).

**FITS '22-'24 600, 600EPS, 600EPS LE**  
**FITS '21-'24 450**



PART #: 1436-700

## DUAL MIRROR KIT

Lightweight, easy to install. Provides excellent dual rearview vision. Black powder coating for a long-lasting finish. Rustproof. Sold in pairs.

**FITS '22-'24 600, 600EPS, 600EPS LE**  
**FITS '21-'24 450**



PART #: 1436-510

## VEHICLE COVERS



## TRAILERABLE COVER

Protective, water-resistant, urethane-coated, 600-denier polyester. Secure, heavy-duty straps at front, center and rear. Fast, easy-to-use locking buckles. Fits with front and rear bumpers installed.

**FITS '22-'24 600, 600EPS, 600EPS LE**

PART #: 3436-034 - **WITH WINDSHIELD**

PART #: 3436-033 - **WITHOUT WINDSHIELD**



## STORAGE COVER

Wards off sun, moisture and dust with urethane-coated, 150-denier polyester. Snug, custom fit from elastic stretch cords. Not for trailering.

**FITS '22-'24 600, 600EPS, 600EPS LE**

PART #: 3436-032

## LICENSE PLATE KIT

Easy-attach aluminum plate kit with room for letters, numbers, and state ID. Powder-coated black base plate with opposite-colored letters and numbers included.

**FITS '22-'24 600, 600EPS, 600EPS LE**  
**FITS '21-'24 450**



PART #: 2436-286







**TRACKER**  
OFF ROAD

# 800SX & 800SX CREW



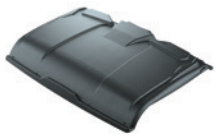
# PACKAGES

## SOFT CAB KIT BYO - 3436-239 SOFT CAB KIT BYO - CREW - 3436-240

Cabs are essential for superior protection against dirt, dust, and the elements. These kits include lightweight cost-effective soft doors, a poly hard top, and rearview mirror. Designed with customization in mind, this kit is for those who wish to choose their own windshield and rear panel separately. Options include various styles of glass and poly panels. Also includes seal kit 2436-762.

*BYO KITS DO NOT INCLUDE WINDSHIELD OR REAR PANEL*

**FITS '19 - '24 800SX, 800SX LE  
FITS '19 - '24 800SX Crew, 800SX LE Crew, 800SX Waterfowl Crew**



POLY HARD TOP  
(2436-610)

POLY HARD TOP (CREW)  
(2436-649)



SOFT DOORS  
(2436-627)



REAR SOFT DOORS  
(CREW ONLY)  
(2436-628)



REARVIEW MIRROR  
(2436-630)

## HARD CAB KIT BYO - 3436-241 HARD CAB KIT BYO - CREW - 3436-242

Build-your-own cab option centered around our durable hard door offerings that keep your cab sealed tight from the weather. CREW includes the same components but a CREW-specific roof and rear doors. Also includes seal kit 2436-762.

*BYO KITS DO NOT INCLUDE WINDSHIELD OR REAR PANEL*

**FITS '19 - '24 800SX, 800SX LE  
FITS '19 - '24 800SX Crew, 800SX LE Crew, 800SX Waterfowl Crew**



POLY HARD TOP  
(2436-610)

POLY HARD TOP (CREW)  
(2436-649)



HARD DOORS  
(3436-176)



REAR HARD DOORS  
(CREW ONLY)  
(2436-626)



REARVIEW MIRROR  
(2436-630)



## HARD CAB ELITE KIT - 3436-243

## HARD CAB ELITE KIT - CREW - 3436-244

**NEW**

Keep out the elements with this comprehensive Hard Cab package that outfits the exterior and interior with our most effective and popular cab products. CREW includes the same components but a CREW-specific roof and rear doors. Also includes seal kit 2436-762.

**FITS '19 - '24 800SX, 800SX LE**

**FITS '19 - '24 800SX Crew, 800SX LE Crew, 800SX Waterfowl Crew**



**POLY HARD TOP**  
(2436-610)

**POLY HARD TOP (CREW)**  
(2436-649)



**HARD DOORS**  
(3436-176)



**REAR HARD DOORS (CREW ONLY)**  
(2436-626)



**GLASS WINDSHIELD**  
(3436-110)



**REARVIEW MIRROR**  
(2436-630)



**SLIDING REAR GLASS WINDOW**  
(2436-624)



**WINDSHIELD WIPER KIT**  
(2436-653)



**WINDSHIELD WASHER KIT**  
(2436-654)



**ROOF CONSOLE**  
(2436-615)



**ROOF CONSOLE HARNESS KIT**  
(2436-667)

## ULTIMATE STORAGE KIT - 3436-128

Maximize your interior storage with our best offerings to take advantage of every space in the cab.

**FITS '19 - '24 800SX, 800SX LE, 800SX Crew, 800SX LE Crew, 800SX Waterfowl Crew**



**CENTER SEAT CONSOLE**  
(2436-669)



**UNDERSEAT STORAGE**  
(2436-670)



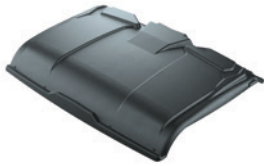
**OVERHEAD CONSOLE**  
(2436-615)

*\*No haggle no hassle™ National Price. Prices, package quantities, specifications and materials may change without notice. For more information, visit [TRACKEROFFROAD.COM](http://TRACKEROFFROAD.COM).*

**TRAIL KIT - 2436-971**  
**TRAIL KIT - CREW - 2436-974**

Your bread-and-butter components for taking the road less traveled. CREW includes CREW-specific roof.

**FITS '20 - '24 800SX, 800SX LE, 800SX Waterfowl**  
**FITS '20 - '24 800SX Crew, 800SX LE Crew, 800SX Waterfowl Crew**



**POLY HARD TOP**  
(2436-610)



**POLY HARD TOP (CREW ONLY)**  
(2436-649)



**REAR POLYCARBONATE WINDOW**  
(2436-623)



**FULL POLYCARBONATE WINDSHIELD**  
(2436-618)



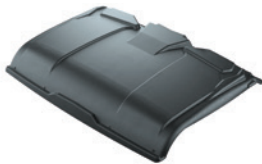
**REARVIEW MIRROR - CENTER**  
(2436-630)

**TRAIL ELITE KIT - 3436-245** NEW  
**TRAIL ELITE KIT - CREW - 3436-246** NEW

All the same great components as the Trail Kit but with an upgraded Tilt-Out windshield for open-air employment. Feel the breeze. Enjoy the outdoors.

CREW includes CREW-specific roof.

**FITS '20 - '24 800SX, 800SX LE**  
**FITS '20 - '24 800SX Crew, 800SX LE Crew, 800SX Waterfowl Crew**



**POLY HARD TOP**  
(2436-610)



**POLY HARD TOP (CREW ONLY)**  
(2436-649)



**REAR POLYCARBONATE WINDOW**  
(2436-623)



**TILT-OUT WINDSHIELD**  
(3436-111)



**REARVIEW MIRROR - CENTER**  
(2436-630)

**BACKCOUNTRY KIT - 2436-972**  
**BACKCOUNTRY KIT - CREW - 2436-975**

Hardcore recovery and protection components to help and push your equipment get the job done.

**FITS '20 - '24 800SX (Excludes LE)**



**BRUSHGUARDS**  
(2436-632)



**GRILLE GUARD**  
(2436-631)



**WARN VRX 45 WINCH**  
(10002695)



**WINCH INSTALL KIT**  
(100008510)  
(100008512) - CREW



**REAR BUMPER**  
(2436-633)

## GARMIN CONNECTED PACKAGE PREMIUM - 3436-130 - US ONLY

## GARMIN CONNECTED PACKAGE STANDARD - 3436-161

The durable IP67 rated Garmin Tread navigation unit comes with preloaded maps, turn-by-turn trail navigation, path planning, and Group Ride tracking compatibility (up to 20 riders) with the Tread mobile app. Premium package features Group Ride Radio - includes voice communication via fist mic or compatible bluetooth helmet (sold separately) with other Group Ride Radio users.

**FITS '19 - '24 800SX, 800SX LE, 800SX Crew, 800SX LE Crew, 800SX Waterfowl, 800SX Waterfowl Crew**



**TREAD PREMIUM GPS KIT**  
(3441-555)



**GPS INSTALL KIT**  
(3436-134)

**TREAD STANDARD GPS KIT**  
(3441-557)

## WINTER PACKAGE 72-IN. POLY W/ WINCH - 3436-166

## WINTER PACKAGE 72-IN. POLY W/ WINCH - CREW - 3436-172

Prepare for winter's toughest jobs with this package that includes everything you need to install and operate the lightweight, durable 72-in. plow. The VRX45 offers 4500lbs of WARN pulling power. The 72-in. SPEEDPlow system offers lightweight, durable poly 72-in. long x 20-in. tall blade on a quick-attach system that allows plow install/removal in seconds. Plow with 5 different blade angle positions that can be easily positioned with a foot release. The IP68 rated VRX45 offers 4500lbs of WARN pulling power.

**FITS '19 - '24 800SX**



**WINCH**  
(10002695)



**WINCH INSTALL KIT**  
(10008510)  
(10008512) - CREW



**PLOW KIT**  
(2436-676)



**72-IN. POLY BLADE**  
(2436-300)

## WINTER PACKAGE 66-IN. STEEL W/ WINCH - 3436-168

## WINTER PACKAGE 66-IN. STEEL W/ WINCH - CREW - 3436-173

Take on snow plowing with ease. This package includes everything you need to install and operate the rugged steel 66-in. plow. The IP68 rated VRX45 offers 4500lbs of WARN pulling power. Our 66-in. SPEEDPlow system offers a stamped steel 66-in. long x 20-in. tall blade on a quick-attach system that allows plow install/removal in seconds. Plow with 5 different blade angle positions that can be easily positioned with a foot release.

**FITS '19 - '24 800SX**



**WINCH**  
(10002695)



**WINCH INSTALL KIT**  
(10008510)  
(10008512) - CREW



**PLOW KIT**  
(2436-676)



**66-IN. STEEL BLADE**  
(2436-297)

\*No haggle no hassle™ National Price. Prices, package quantities, specifications and materials may change without notice. For more information, visit [TRACKEROFFROAD.COM](http://TRACKEROFFROAD.COM).

**WINTER PACKAGE 72-IN. POLY - 3436-167**  
**WINTER PACKAGE 66-IN. STEEL - 3436-169**

Simplified push frame and blade package for those who already have a winch installed.

**FITS '19 - '24 800SX LE**



**PLOW KIT**  
(2436-676)



**72-IN. POLY BLADE**  
(2436-300)

**66-IN. STEEL BLADE**  
(2436-297)

**PROTECTION**

**HEADACHE RACK**

Added protection of rear window. All-metal construction. Installs to front edge of cargo bed

**FITS '20- '24 800SX, 800SX LE, 800SX CREW, 800SX LE CREW (EXCLUDES WATERFOWL)**



PART #: 2436-636

**GRILLE GUARD**

Additional protection. Mounts directly to stock bumper. Center section of grille guard

**FITS '20- '24 800SX, 800SX CREW (EXCLUDES LE & WATERFOWL)**



PART #: 2436-631

**BRUSHGUARDS**

Additional structure and protection. Mounts directly to stock bumper. Grille Guard (2436-631) required for installation and use. Not intended for towing.

**FITS '20- '24 800SX, 800SX CREW (EXCLUDES LE & WATERFOWL)**



PART #: 2436-632

## FRONT A-ARM GUARDS

Thick polyethylene guards. Mounts to lower suspension arms in front of CV boots.

**FITS '20- '24 800SX, 800SX LE, 800SX CREW, 800SX LE CREW, 800SX WATERFOWL, 800SX WATERFOWL CREW**



PART #: 2436-640

## REAR BUMPER

Provides added vehicle protection. All-metal construction. Quick-mount to rear of cargo bed.

**FITS '20- '24 800SX, 800SX LE, 800SX CREW, 800SX LE CREW, 800SX WATERFOWL, 800SX WATERFOWL CREW**



PART #: 2436-633

## WINCHES

### WIRELESS REMOTE UPGRADE KIT

Easy plug-and-play installation. 50ft operation radius. Automatic system shut-off.

**WORKS WITH ALL WARN VRX WINCHES**



PART #: 2436-110

## SUPERIOR PERFORMANCE, CUSTOM FIT, SPECIFICALLY MADE!

Specific to the **800SX** Series, our **WARN® VRX 45 Winch** features a custom fit and superior performance to ensure confidence in every ride.



- 4,500lbs of pulling capacity
- Durable all-metal construction
- Load-holding brake for great control
- IP68-rated waterproof sealing keeps the elements out
- 50ft. of 1/4-in. steel rope
- OEM designed and engineered to the specific vehicle specifications for the perfect fit
- Backed by WARN®'s limited lifetime warranty (mechanical) and 3 year warranty (electrical)
- Requires Winch Installation Kit, sold separately

## WARN VRX 45 WINCH

PART #: 10002695 WARN VRX 45 WINCH

PART #: 10008510 WINCH MOUNTING KIT

PART #: 10008512 WINCH MOUNTING KIT - CREW



# FIND THE RIGHT PLOW FOR YOU

Get ready for Winter! Accessorize your 800SX Series with our plow offerings by following the steps below.



## STEP 1:

### Choose Your Winch

**10002695** Warn VRX 4,500lb Winch

## STEP 2:

### Choose Your Winch Mount

**10008510** Warn VRX 45 Winch Mounting Kit  
**10008512** Warn VRX 45 Winch Crew Mounting Kit

## STEP 3:

### Choose Your Plow Mount

**2436-676** Plow Push Frame And Frame Mount

## STEP 4:

### Choose Your Blade

**2436-297** 66-in. Steel  
**2436-298** 72-in. Steel  
**2436-300** 72-in. Poly

## PLOW ACCESSORIES

### SPEEDPLOW STEEL WEAR BAR

Easy-install steel wear bars to keep your plow in optimal condition. NOTE: All SPEEDPlow blades come standard with one wear bar pre-installed.



PART #: 2436-317

**66-IN.**

PART #: 2436-318

**72-IN.**

### DRIFT CUTTERS

Move and control more snow while making cleaner passes with drift cutters installed on your SPEEDPlow blade. NOTE: Does not work with curb finders. Sold in pairs.

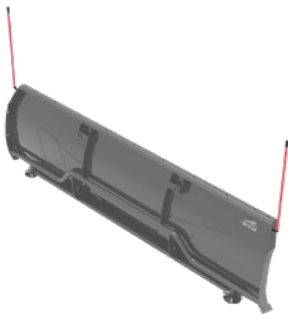


PART #: 2436-275

**72-IN. BLADE**

### PLOW BLADE EDGE MARKERS

Increase visibility and know exactly where your blade edges are with these easy-install markers. Great when snow is piled high and light levels are low.



PART #: 2436-277

### CURB FINDERS

Heavy-duty, powder-coated 0.25-in. stamped steel plate protects the plow from damage caused by contact with curbs. Curb finders are easy to install on any SPEEDPlow blade. Does not work with drift cutters or UHMW wearbar. Sold in pairs.



PART #: 2436-302

# MAKE IT YOURS

This kit allows you to customize your cab to your needs! Pick a front



## WINDSHIELDS

- 1 3436-111 TILT-OUT WINDSHIELD **NEW**
- 2 2436-616 GLASS WINDSHIELD
- 3 2436-618 FULL POLY VENTED WINDSHIELD (HARD-COATED)
- 4 2436-617 FULL POLY WINDSHIELD

### NOT SHOWN

- 3436-110 CURVED GLASS WINDSHIELD
- 2436-620 HALF POLY WINDSHIELD (HARD-COATED)
- 2436-619 HALF POLY WINDSHIELD

## TOPS

- 5 2436-613 BIMINI TOP
- 6 2436-610 HARD TOP

### NOT SHOWN

- 3436-065 PREMIUM COMPOSITE ROOF
- 3436-067 PREMIUM ROOF LINER
- 2436-649 HARD TOP - CREW
- 2436-614 BIMINI TOP - CREW

## DOORS

- 7 2436-627 FRONT SOFT DOORS
- 8 3436-176 FRONT HARD DOORS **NEW**

### NOT SHOWN

- 2436-628 REAR SOFT DOORS - CREW
- 3436-175 REAR HARD DOORS - CREW **NEW**

# OUR OWN <<

nt windshield and back window to complete your ideal configuration.



## REAR WINDOWS

- 9 2436-621 GLASS REAR WINDOW
- 10 2436-624 SLIDING GLASS REAR WINDOW
- 11 2436-622 POLY REAR WINDOW
- 12 2436-623 POLY REAR WINDOW (HARD-COATED)
- 13 2436-677 SOFT REAR WINDOW



\*No haggle no hassle™ National Price. Prices, package quantities, specifications and materials may change without notice.  
For more information, visit [TRACKEROFFROAD.COM](http://TRACKEROFFROAD.COM).

**STORAGE**

**CENTER SEAT CONSOLE**

Center storage compartment with weather-resistant lid. Cup holders and documents storage slot. Replaces center seat.

**FITS '20-'24 800SX, 800SX LE, 800SX CREW, 800SX LE CREW, 800SX WATERFOWL, 800SX WATERFOWL CREW**



PART #: 2436-669

**UNDER-SEAT STORAGE BOX**

Large under-seat storage compartment. Weather resistant access doors.

**FITS '20-'24 800SX, 800SX LE, 800SX CREW, 800SX LE CREW, 800SX WATERFOWL, 800SX WATERFOWL CREW**



PART #: 2436-670

**ELECTRO-HYDRAULIC CARGO BOX LIFT**

Powerful electro-hydraulic cylinder. Dumps loaded cargo bed with ease. Bolt-in installation.

**FITS '20 - '24 800SX, 800SX LE, 800SX CREW, 800SX LE CREW, 800SX WATERFOWL, 800SX WATERFOWL CREW**



PART #: 2436-662

**LIGHTING**

**LED INTERIOR DOME LIGHT**

LED light with integrated push-button for independent operation, Mounts to Overhead Console (2436-615). Connects to Roof Console Harness (2436-667).

**FITS '20-'24 800SX, 800SX LE, 800SX CREW, 800SX LE CREW, 800SX WATERFOWL, 800SX WATERFOWL CREW**



PART #: 2436-656

## BEACON WARNING LIGHT

Orange Beacon Light provides increased visibility. Mounts to Roof Light Mounting Bar (2436-668). Requires Roof Light Harness (2436-678 or 2436-958-CREW), Roof Console Harness (2436-667), Overhead Console (2436-615), and Switch (1436-178). If installing with LED Work Lights, you only need the switch.

**FITS '20-'24 800SX, 800SX LE, 800SX CREW, 800SX LE CREW, 800SX WATERFOWL, 800SX WATERFOWL CREW**



PART #: 2436-657

## LED WORK LIGHTS (PAIR)

Required -(Sold Separately): Rear Light Mount - (2436-668), Overhead Console -(2436-615), 3 Pass Harness - (2436-678) or Crew Harness- (2436-958) , Backlit Switch - (0409-204)

**FITS '20 - '24 800SX, 800SX LE, 800SX CREW, 800 SX LE CREW, 800SX WATERFOWL, 800SX WATERFOWL CREW**



PART #: 2436-658

## 42-IN. DUAL-ROW LED LIGHT BAR

The 240-watt, 42-in. Dual-Row LED light bar. Offers a curved design and 2 different beam patterns. Has 19,200 raw lumens and 6,000K color temperature has a 10-30V DC input voltage. Requires Light Bar Harness (0486-747), Harness Adapter (0486-749), Light Bar Mount (3436-146) and Switch (0409-204).

**FITS '20-'24 800SX, 800SX LE, 800SX CREW, 800SX LE CREW, 800SX WATERFOWL, 800SX WATERFOWL CREW**



PART #: 654073

## 22-IN. DUAL-ROW LED LIGHT BAR NEW

The 120-watt, 22-in. Dual-Row LED light bar delivers 9,600 raw lumens and 6,000 color temp with a 10-30V DC input voltage. Requires Light Bar Harness (0486-747), Harness Adapter (0486-748), Light Bar Mount (3430-146) and Switch (0409-204).

**FITS '20-'24 800SX, 800SX LE, 800SX CREW, 800SX LE CREW, 800SX WATERFOWL, 800SX WATERFOWL CREW**



PART #: 654072

**9.25-IN. SINGLE-ROW LED LIGHT BAR**

The 18-watt, 9.25-in. single-row LED light bar delivers 1,620 raw lumens and 6,000 color temp with a 10-30V DC input voltage. Requires light bar harness (0486-747), harness adapter (0486-748), light bar mount (3430-146) and switch (0409-204).

**FITS '20-'24 800SX, 800SX LE, 800SX CREW, 800SX LE CREW, 800SX WATERFOWL, 800SX WATERFOWL CREW**



PART #: 654077

**LIGHTBAR MOUNT** NEW

**FITS '20-'24 800SX, 800SX LE, 800SX CREW, 800SX LE CREW, 800SX WATERFOWL CREW**



PART #: 3436-146

**REAR LIGHT MOUNTING BAR**

Secures roof lighting to a single bar. Mounts directly to the ROPS above the rear edge of roof. Rigid design with steel construction

**FITS '20-'24 800SX, 800SX LE, 800SX CREW, 800SX LE CREW, 800SX WATERFOWL, 800SX WATERFOWL CREW**



PART #: 2436-668

**DOUBLE SPLITTER** NEW

**FITS '20-'24 800SX, 800SX LE, 800SX CREW, 800SX LE CREW, 800SX WATERFOWL, 800SX WATERFOWL CREW**



PART #: 1639-623

**TRIPLE SPLITTER** NEW

**FITS '20-'24 800SX, 800SX LE, 800SX CREW, 800SX LE CREW, 800SX WATERFOWL, 800SX WATERFOWL CREW**



PART #: 1639-624

**LIGHT BAR HARNESS MAIN** NEW

**FITS '20-'24 800SX, 800SX LE, 800SX CREW, 800SX LE CREW, 800SX WATERFOWL, 800SX WATERFOWL CREW**

PART #: 0486-747

**LIGHT BAR HARNESS ADAPTERS** NEW

**FITS '20-'24 800SX, 800SX LE, 800SX CREW, 800SX LE CREW, 800SX WATERFOWL, 800SX WATERFOWL CREW**

PART #: 0486-748

PART #: 0486-749

**REAR LIGHT MOUNTING WIRE HARNESS**

Used to run power from Roof Console Harness (2436-667) to rear of roof. Conceals to underside of Roof Light Rail (2436-668)

**FITS '20-'24 800SX, 800SX LE  
FITS '20-'24 800SX CREW, 800SX LE CREW, 800SX WATERFOWL, 800SX WATERFOWL CREW**



PART #: 2436-678

PART # (CREW): 2436-958

## ROOF CONSOLE HARNESS KIT

Connects roof lights to overhead switch panel. Installs behind Overhead Console (2436-615) required. Hard-Top Plastic Roof or Bimini Top required.

**FITS '20-'24 800SX, 800SX LE, 800SX CREW, 800SX LE CREW, 800SX WATERFOWL, 800SX WATERFOWL CREW**



PART #: 2436-667

## LED LIGHT BAR SWITCH NEW

**FITS '20-'24 800SX, 800SX LE, 800SX CREW, 800SX LE CREW, 800SX WATERFOWL, 800SX WATERFOWL CREW**



PART #: 0409-204

## ON/OFF SWITCH

**FITS '20-'24 800SX, 800SX LE, 800SX CREW, 800SX LE CREW, 800SX WATERFOWL, 800SX WATERFOWL CREW**



PART #: 1436-178

## INTERIOR/CAB

### SUN VISORS (PAIR)

Attaches to overhead ROPS structure. Adjustable positioning. Sold in pairs

**FITS '20-'24 800SX, 800SX LE, 800SX CREW, 800SX LE CREW, 800SX WATERFOWL, 800SX WATERFOWL CREW**

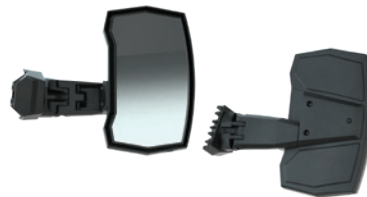


PART #: 2436-679

### SIDE MIRROR

Oversized mirror face incorporates multiple viewing positions. Adjustable and impact resistant with breakaway feature. Works on driver or passenger side. Requires mount (sold separately). Sold individually

**FITS '20 - '24 800SX, 800SX LE, 800SX CREW, 800SX LE CREW, 800SX WATERFOWL, 800SX WATERFOWL CREW**



PART #: 2436-629

### REARVIEW MIRROR

Curved mirror for wider viewing range. Surface mounts to upper ROPS. Fully adjustable

**FITS '20-'24 800SX, 800SX LE, 800SX CREW, 800SX LE CREW, 800SX WATERFOWL CREW**



PART #: 2436-630



## SOFT DOOR SIDE MIRROR MOUNT

Allows mounting to Soft Doors (2436-627) or flat surface.

**FITS '20-'24 800SX, 800SX LE, 800SX CREW, 800SX LE CREW, 800SX WATERFOWL, 800SX WATERFOWL CREW**



PART #: 1541-755

## HARD DOOR SIDE MIRROR MOUNT

**FITS '20-'24 800SX, 800SX LE, 800SX CREW, 800SX LE CREW, 800SX WATERFOWL, 800SX WATERFOWL CREW**



PART #: 1541-754

Mounts to hard doors 3436-069

PART #: 1541-986

Mounts to hard doors 3436-176

## ROPS SIDE MIRROR MOUNT

Allows mounting to vehicle ROPS.

**FITS '20-'24 800SX, 800SX LE, 800SX CREW, 800SX LE CREW, 800SX WATERFOWL, 800SX WATERFOWL CREW**



PART #: 1541-753

## OVERHEAD CONSOLE

Molded overhead console houses electrical wiring and includes storage pockets. Includes rocker switch mounting panel. Ideal for use with windshield wipers and overhead lighting. Compatible with Bimini Top for TRACKER® 800SX (2436-613); Bimini Top for 800SX CREW (2436-614) and Hard-Top Plastic Roof for 800SX (2436-610); Hard-Top Plastic Roof for 800SX CREW (2436-649).

**FITS '20-'24 800SX, 800SX LE, 800SX CREW, 800SX LE CREW, 800SX WATERFOWL, 800SX WATERFOWL CREW**



PART #: 2436-615

## WINDSHIELD WIPER KIT

Wide-range clearing for driver and passenger. Includes wiper, motor, wiring harness and switch. Recommended for glass windshields only.

**FITS '20-'24 800SX, 800SX LE, 800SX CREW, 800SX LE CREW, 800SX WATERFOWL CREW**



PART #: 2436-653

## WINDSHIELD WASHER KIT

Adjustable spray pattern. Includes half-gallon tank, 12V pump, wiring harness, and all hardware. Works with Glass Windshield (2436-616) and Wiper (2436-653). Requires Roof Console Harness (2436-667).

**FITS '20-'24 800SX, 800SX LE, 800SX CREW, 800SX LE CREW, 800SX WATERFOWL, 800SX WATERFOWL CREW**



PART #: 2436-654

## CAB HEATER SYSTEM

Outstanding performance and durability for all-day comfort. Adjustable vent control for defrosting the face and foot areas. Variable temperature and fan speeds. All dash-mounted controls

**FITS '20-'24 800SX, 800SX LE, 800SX CREW, 800SX LE CREW, 800SX WATERFOWL, 800SX WATERFOWL CREW**



PART #: 2436-650

## CAB SEAL KIT

Further seals cab components at front, rear, and floor of vehicle. Improves protection from dust and wind inside the cab.

**FITS '20-'24 800SX, 800SX LE, 800SX CREW, 800SX LE CREW, 800SX WATERFOWL, 800SX WATERFOWL CREW**

PART #: 2436-762

## VEHICLE COVERS

### TRAILERABLE VEHICLE COVER

Heavy-duty 600-denier polyester. Scuff-resistant padding. Adjustable ratchet straps. Fitted to work with installed accessories

**FITS '20 - '24 800SX, 800SX LE**



PART #: 2436-647

## COLD-WEATHER GEAR

### ENGINE BLOCK HEATER

Makes cold-weather starting smoother. Prewarms liquid-cooled engines with 375-watts of power. Incorporated thermal switch prevents overheating and is UL®- and CSA-approved.

**FITS '20-'24 800SX, 800SX LE, 800SX CREW, 800SX LE CREW, 800SX WATERFOWL, 800SX WATERFOWL CREW**



PART #: 2436-663

## TOWING

### FRONT RECEIVER HITCH

Accepts standard 2-in. receiver. Mounts directly to frame of vehicle. Easy installation.

**FITS '20-'24 800SX, 800SX LE, 800SX CREW, 800SX LE CREW, 800SX WATERFOWL CREW**



PART #: 2436-639

# OX400 & OX EV



# PACKAGES

## HAULS-ALL PACKAGE - 10001866PKG

Includes: (699872) Split Windshield, (10001080) Rearview Mirror, (652838) Bed Net, (652349) D-Ring Bed Tie Down Kit, and instructions.

**FITS '19 - '24 OX400 & '23-'24 OX EV**



**SPLIT WINDSHIELD**  
(699872)



**REARVIEW MIRROR**  
(10001080)



**BED NET KIT**  
(652838)



**BED D-RING KIT**  
(652349)

## WINDSHIELDS

### SPLIT WINDSHIELD

Made of hard-coated polycarbonate. Allows you to flip the windshield up for a full shield or down for half shield. Enjoy the option of added protection or increased airflow.

**FITS '19 - '24 OX400 & '23-'24 OX EV**



PART #: 699872

## INTERIOR ACCESSORIES

### SIDE VIEW MIRROR

Features damage-resistant housing, durable steel clamps, and a breakaway design to deflect hits from stray objects.

**FITS '19 - '24 OX400 & '23-'24 OX EV**



PART #: 652450

### REAR VIEW MIRROR

Slightly convex to provide a wider angle for better vision. Rubber seal ball mount reduces vibration and allows for adjustability.

**FITS '19 - '24 OX400 & '23-'24 OX EV**



PART #: 10001080

## TOWING & STORAGE

### BED NET

Elastic cargo net mounts to the back side of your cargo bed. Provides additional secure storage space for small items.

**FITS '19 - '24 OX400 & '23-'24 OX EV**



PART #: 652838

### D-RING KIT

Easy to install D-Ring kit mounts to interior side walls of the cargo bed. Provide sturdy points to strap down cargo for secure transport.

**FITS '19-24 OX400 & '23-'24 OX EV**



PART #: 652349

### BED TOOL HOLDER KIT

Cargo bed mounted tool holder provides a safe storage location for longer tools and prevents them from shifting during transit.

**FITS '19 - '24 OX400 & '24 OX EV**



PART #: 652510

### HITCH, HEAVY DUTY-WLD

Compatible with standard 2-in. hitch.

**FITS '19 - '24 OX400 & '23 - '24 OX EV**



PART #: 646730

### HITCH, ANGLE-WLD

Compatible with standard 2-in. hitch.

**FITS '19 - '24 OX400 & '23 - '24 OX EV**



PART #: 646729

### HITCH, CLEVIS-WLD

Compatible with standard 2-in. hitch.

**FITS '19 - '24 OX400 & '23 - '24 OX EV**



\*Does not include pin.

PART #: 646727

### TOOL MOUNT, PLASTIC BED FRONT WALL-KIT

Cargo bed mounted tool holder provides a safe storage location for longer tools and prevents them from shifting during transit.

**FITS '19 - '24 OX400 & '23 - '24 OX EV**

PART #: 664374

## EQUIPMENT RACK KIT

This equipment rack mounts to the interior side wall of the cargo bed. It is designed to hold equipment such as pole saws and string trimmers securely outside of the bed.

**FITS '19 - '24 OX400 & '23 - '24 OX EV**



PART #: 664375

---

## BED DIVIDER KIT

Cargo bed divider allows you to organize your work space and maximize your work load.

**FITS '19 - '24 OX400 & '23 - '24 OX EV**



PART #: 652657

---

# UNIVERSAL



**TRACKER**  
OFF ROAD

## BATTERY CHARGERS

### BATTERY JUMP PACK

Quickly start your ATV/UTV. Lightweight, long-lasting 8,000 mAh lithium ion power source. Features LCD display, two USB charging ports, and a powerful 3-mode LED light. Cranking current; 400A peak, 200A cranking. Includes smart cables, AC, and 12V car charging adapter.

**UNIVERSAL**



PART #: 2436-980

### HEAVY-DUTY SEALED BATTERY

Increased starting power from lead-calcium technology. Leak-free, spillproof design. 30A.h rated. 385 cold-cranking amps. 6.5-in. L x 5.17-in. W x 6.9-in. H.

**UNIVERSAL**



PART #: 0445-170

### 1.5A BATTERY MAINTAINER

Fully automatic maintainer for ATV/UTV batteries. Automatic voltage detection. Reverse hook-up protection. Includes alligator clips and ring terminal leads. 12V, 1.5A.

**UNIVERSAL**



PART #: 8639-357

## ELECTRONICS

### ACCESSORY PLUG KIT

Powers 12V DC accessories from a cigarette-lighter-style outlet. 15A max.

**UNIVERSAL**



PART #: 0436-435

### ACCESSORY EXTENSION HARNESSSES

Used to extend any Style 21 accessory plug. Allows you to add lights where you want them.

**UNIVERSAL**



PART #: 1436-834 - 24-IN.

PART #: 1436-643 - 66-IN.

### ELECTRICAL PLUG

Add 12V DC accessory plug (Style 21) to your vehicle. Links power to trailered accessories with a 12V DC connection. 12-in. plug-in link. 15A max.

**UNIVERSAL**



PART #: 0436-087

### SWITCH MOUNT PANEL KIT

Includes switch panel and two plugs for installing added accessories. Accommodates rectangular-style switches.

**UNIVERSAL**



PART #: 1436-008



## SWITCH

Non-backlit on/off switch for additional accessories.

**UNIVERSAL**



PART #: 1436-178

## SWITCH

**UNIVERSAL**



PART #: 0409-204

## ELECTRICAL SUPPLY SPLITTER

Adapter plugs into Style 21, 12V factory connector from vehicle harness and splits power to outlets for either 2 or 3 accessories.

**UNIVERSAL**



\*Part# 1639-624 shown

PART #: 1639-623

**2-OUTLET**

PART #: 1639-624

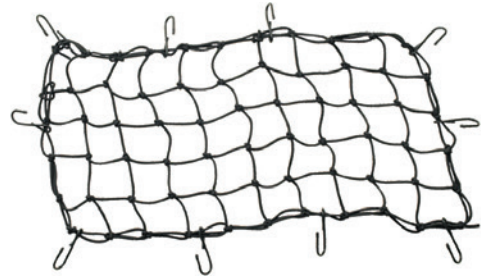
**3-OUTLET**

## ACCESSORIES

### CARGO NET

Versatile 15-in. x 30-in. net with coated steel hooks. Secures cargo or other items to rack or cargo bed.

**UNIVERSAL**



PART #: 2436-454

### TOW STRAP WITH CLEVIS

10,000lb tensile strength for durability. Heavy-duty, 20ft tow strap with included storage bag. Looped at ends with easy-attach, rust-resistant, zinc-plated shackles.

**UNIVERSAL**



PART #: 2436-491

### HITCH LOCK

Durable hardened steel with black finish and quarter-turn lock. Tubular key won't bend, cannot be false-locked. Dust cap included. Ideal for locking your Winch Carrier to the Front Winch Mount. 5/8-in. pin fits 2-in. x 2-in. receivers.

**5/8-IN. PIN FITS 2-IN. X 2-IN. RECEIVERS**



PART #: 1436-855

## SHOCKSTRAP RATCHET STRAP

UNIVERSAL

PART #: 2436-985



## TRAILSIDE KIT

Perfect for any rider. Provides trail repair essentials should that unwanted moment happen. Includes: Air Compressor, tire repair kit, jumper cables, ratchet tie-down straps, tow strap, zip ties, duct tape, cloth rags, first aid kit.

UNIVERSAL



PART #: 2436-989



Upgrade your vehicle with a multifunctional Garmin GPS so you can share your routes and stay connected to your crew. Go confidently into every ride with Tread™ the rugged 5.5-in. Powersport Navigator. With a glove-friendly touch screen this device is built to withstand extreme terrains, temperatures, and weather.

## GPS INSTALL KIT

**3436-134** '20-'24 800SX, 800SX LE, 800SX CREW, 800SX LE CREW, 800SX WATERFOWL, 800SX WATERFOWL CREW

**3436-133** '21-'24 600 ATV, 600 EPS ATV, 600 EPS LE ATV,

Package quantities, specifications and materials may change without notice.

# BUILT FOR ADVENTURE.

## GARMIN® TREAD PREMIUM GPS KIT 3441-555

- Group Ride Radio (US only)
- Preloaded Topography/Public and Private Land
- Rugged Design
- Secure Powersports Mount
- Tread App



Stay connected with Group Ride Mobile, featuring group tracking and route sharing with up to 20 riders. Upgrade to Group Ride Radio voice communication with the Premium GPS kit (US only).



Get the lay of the land with **Preloaded Topographic** and street maps for North and South America.



High-resolution **Birdseye Satellite Imagery** can be downloaded directly to the device via Wi-Fi® connectivity. No subscription needed.



**Built in** altimeter, barometer, compass, pitch and roll gauges help you navigate any challenging terrain.

*\*No haggle no hassle™ National Price. Prices, package quantities, specifications and materials may change without notice. For more information, visit [TRACKEROFFROAD.COM](https://www.garmin.com/US/en/trackeroffroad).*

**GARMIN**™

# OIL CARE

A close-up, high-angle photograph of a dark-colored oil filler neck on a vehicle. A stream of bright yellow oil is being poured from a container into the neck. The background is dark and textured, suggesting the engine compartment. A red banner with white text is positioned at the top of the image.

**TRACKER**  
**OFF ROAD**

Refer to owner's manual for your vehicle's oil and lubricant specifications. All oil products are drop-shipped by supplier, potentially resulting in longer delivery time.

## 0W-40 SYNTHETIC OIL

Advanced multi-grade. Superior rust and corrosion protection even during periods of non use. Offers maximum engine performance along with unique shear-stable additive formula that protects against engine wear, carbon buildup and sludge formation. Wet-clutch certified for use in TRACKER OFF ROAD™ wet-clutch engines. Automotive engine oils DO NOT meet the requirements for use in TRACKER OFF ROAD ATVs equipped with a wet clutch.

### UNIVERSAL



PART #: 2436-785 - QUART

PART #: 2436-784 - GALLON

## 15W-50 SYNTHETIC OIL

Full Synthetic 15W-50 is a heavier-viscosity formula of the original, proven Synthetic 4-Cycle Oil. Formulated specifically for hot-weather use, it provides ultimate hot-temperature engine protection and prevents thermal breakdown in severe conditions. NOTE: Not recommended for use in ambient temperatures below 32° heavier viscosity will make starting more difficult in extreme cold.

### UNIVERSAL



PART #: 2436-787 - QUART

PART #: 2436-786 - GALLON

## 4-CYCLE 10W-40 ENGINE OIL

4-cycle ATV oil for use with wet-clutch systems reduces component wear and maximizes transmission protection. Multi-grade mineral blended oil.



PART #: 2436-879 - QUART

## 80W-90 GEAR LUBE

Extreme pressure, temperature-stable lubricant for tough conditions. Use in both front and rear differentials and transmissions, see applications and exceptions.

### FITS ALL MODELS FRONT AND REAR AND MODELS WITH TRANSMISSIONS

#### EXCLUDING:

**FRONT: '20 SVX1000**

**REAR: '20-'22 800SX/800SX CREW**



PART #: 2436-863 - QUART

## SYNTHETIC EXTREME PRESSURE TRANSAXLE FLUID

Full synthetic lubricant designed to provide complete lubrication and protection for transaxles. Lighter viscosity formula is more fluid at cold temperatures and remains stable at high temperatures.

**FITS '20 XTR1000, '20-'22 800SX/CREW-REAR TRANSAXLE**



PART #: 2436-865

41-oz.

## OW-40 SYNTHETIC OIL CHANGE KIT

Everything you need to properly service your ATV/ROV: 4-cycle oil, oil filter. See owner's manual for engine specs.



PART #: 2436-776

PART #: 2436-777

PART #: 2436-774

PART #: 2436-775

**FITS '20 XTR1000**

**FITS '20 - '24 500S, '21- '24 600, '21-'24 450, '21 700**

**FITS '20 - '24 800SX, 800SX LE, 800SX CREW, 800SX LE CREW, 800SX WATERFOWL CREW**

**FITS '20 SVX1000**

## ANTIFREEZE 60/40 EXTENDED LIFE

Protects against freezing to -62° and has boiling point of 270°. Extended-Life Antifreeze has three times longer service life. Pre-mixed and ready to pour.

**FITS 300, 450, 570, 700EPS, 500S, 800SX, 800SX CREW, SVX1000, XTR1000**



PART #: 2436-871 **GALLON**

## DOT 4 BRAKE FLUID

Premium fluid designed with corrosion and oxidation inhibitors. Optimizes brake performance if moisture is introduced into the brake system.

**FITS 300, 450, 570, 700EPS, 500S, 800SX, 800SX CREW, SVX1000, XTR1000**

PART #: 5639-848

12-oz.

## FUEL TREATMENT

Dual-antioxidant formula protects & stabilizes fuel for up to 2 years. Ethanol compatible and safe for all powersports applications. Comes with convenient measuring cup.

**UNIVERSAL**

PART #: 2436-868

12-oz.

## OIL FILTERS

Premium replacement oil filters. Exclusively designed for Arctic Cat Off Road ATVs/ROVs



PART #: 0812-110

**'20 - '24 800SX, 800SX LE, 800SX CREW, 800SX LE CREW, 800SX WATERFOWL, 800SX WATERFOWL CREW**

PART #: 105041

**'20 SVX1000**

PART #: 0812-130

**'20 XTR1000**

PART #: 0812-135

**'20 - '24 600, '21 - '24 450, '21 700, '19 - '22 500S**



# PAST MODELS

500S SVX1000 570 700  
EV/EVIs

In our Past Models section you will find our accessory offerings for our '20 - '23 500S, SVX1000, 570, and 700 models.



\*No haggle no hassle™ National Price. Prices, package quantities, specifications and materials may change without notice. For more information, visit [TRACKEROFFROAD.COM](https://www.trackeroffroad.com).



# 500S



## PACKAGES

### TRAIL PACKAGE - 2436-968

Get started with these essential accessories.

Fits '20 - '23 500S



**HARD TOP**  
(2436-241)



**REARVIEW MIRROR**  
(2436-378)



**REAR PANEL**  
(2436-574)



**FULL POLYCARBONATE WINDSHIELD** (2436-573)

### BACKCOUNTRY PACKAGE - 2436-969

Ready to see what this vehicle is made of? Take your TRACKER 500S to the next level with the Backcountry Kit and be prepared for any obstacle that comes your way. Combine with other packages to create the ultimate vehicle for any challenge.

Fits '20 - '23 500S



**REAR BUMPER**  
(2436-347)



**FRONT BUMPER**  
(2436-998)



**3,000LB WINCH**  
(3436-035)



**WINCH MOUNT**  
(2436-348)

### PREMIUM HARD CAB PACKAGE - 2436-970

Keep out the harsh elements with a full cab package.

Fits '20 - '23 500S



**HARD TOP**  
(2436-241)



**REARVIEW MIRROR**  
(2436-378)



**REAR PANEL**  
(2436-574)



**FULL POLYCARBONATE WINDSHIELD** (2436-573)



**HARD DOOR KIT** (2436-399)

## WINTER KIT - 3436-084

Get ready for winter with these essential accessories.

Fits '20 - '23 500S



WINCH MOUNT  
(2436-348)



WARN PROVANTAGE  
3000LB WINCH (3436-035)



PLOW PUSH FRAME AND  
FRAME MOUNT (2436-390)



66-IN STEEL PLOW BLADE  
(2436-297)

## CABS

### SOFT CAB KIT

Outfit your vehicle with superior protection from the elements.

Soft Cab Kit Includes Soft Door Kit (2436-242), Soft Top & Soft Rear Panel (1-piece)\* (2436-334), Full Polycarbonate Windshield (2436-573).

*\*Sold separately as 2 pieces, Soft Rear Panel (2436-332) & Bimini Top (2436-333).*

FITS '20 - '23 500S

PART #: 2436-367



### SOFT DOOR KIT

Made from 9-oz. Series 70 fabric that provides high UV protection. Door window unzips and rolls up. Offers vinyl windows are rated at -30°. Aluminum CNC-formed door frames for a lightweight and consistent fit.

FITS '20 - '23 500S



PART #: 2436-242

### HARD DOOR KIT

HDPE door panels attached to a rugged steel frame. Removable upper panel allows for a half-door configuration. Inside hinges provide automotive finish.

FITS '20 - '23 500S



PART #: 2436-399



## ROOFS

### HARD TOP

Formed HDPE construction with scratch resistant texture.

**FITS '20 - '23 500S**



PART #: 2436-241

### BIMINI TOP

Series 70 fabric with water-repellent urethane coating provides superior durability and high UV resistance. 4-point attachment system makes for quick installation or removal. Tightens easily with strap adjustments. Provides overhead coverage from sun.

**FITS '20 - '23 500S**



PART #: 2436-333

## WINDSHIELDS

### FULL POLYCARBONATE WINDSHIELD

Abrasion-resistant polycarbonate. Custom rubber seal integrates with vehicle hood.

**FITS '20 - '23 500S**



PART #: 2436-573

## REAR PANELS

### REAR PANEL

Polycarbonate construction provides clear rearview. Reduces dust swirl when using a windshield.

**FITS '20 - '23 500S**



PART #: 2436-574

### SOFT REAR PANEL

Durable solution-dyed and urethane-coated Series 70 fabric for premium fade resistance, water repellency and mildew resistance. Zippered window rolls up for controlled airflow and added cab ventilation. Works with Bimini Top and Hard Top. Reduces dust swirl when used with a windshield.

**FITS '20 - '23 500S**



PART #: 2436-332

## WINCHES

### STANDARD ROLLER FAIRLEAD

**FITS '20 - '23 500S**



PART #: 2441-933

## PLOW ROLLER FAIRLEAD

Plow roller fairlead with larger diameter bottom roller for reduced rope stress.

**FITS '20 - '23 500S**



PART #: 2441-934

## HAWSE FAIRLEAD

Cast aluminum painted hawse fairlead for rust-proof durability. Designed for use with synthetic rope to reduce rope fraying.

**FITS '20 - '23 500S**



PART #: 2441-935

## 3,000LB WINCH

WARN winch includes 50ft of durable steel cable. Powerful permanent magnet motor is capable of pulling 3,000lbs. Comes standard with plow roller fairlead and remote-ready harness for control upgrades.

**FITS '20 - '23 500S**



PART #: 3436-035

## WINCH MOUNT

Completely made from heavy-duty steel. Equipped with winch hook loop and designed for standard, Hawse, or plow fairleads. Required for winch installation.



**FITS '20 - '23 500S**

PART #: 2436-348

## ROV SYNTHETIC WINCH ROPE

Replace your standard steel winch cable with Spydura synthetic rope, offering increased strength and better fatigue resistance. Designed for best-use with Hawse fairlead 2441-935. Ideal for plowing when used with fairlead 2441-934.

**FITS '20 - '23 500S**



PART #: 2441-113

## BUMPERS

### FRONT BUMPER

Added vehicle protection with durable powder coated steel tube construction. Styled to vehicle and securely fastened at 4 points with easy install.

**FITS '20 - '23 500S**



PART #: 2436-998

## REAR BUMPER

Heavy-duty, powder-coated tubular steel construction. Mounts to rear box frame to protect box and tailgate areas. Allows bed to dump.

**FITS '20 - '23 500S**



PART #: 2436-347

## MIRRORS

### REARVIEW MIRROR

10-in. x 3.5-in. wide-angle, adjustable convex housing provides excellent rear visibility. Constructed with durable, high-strength reinforced materials. Clamshell mounting clamp fits 1.75-in. ROPS tubing. Includes installation tools and all mounting hardware for easy assembly.

**FITS '20 - '23 500S**



PART #: 2436-378

### SIDE MIRROR KIT

7.75-in. x 4.125-in. convex mirrors provide image stabilization and a wide viewing angle. High-impact ABS plastic housing and shatterproof glass resist damage. Breakaway hinge feature folds mirror back upon impact. Ball-and-socket joint gives a broad range of viewing angles. Includes left and right mirrors.

**FITS '20 - '23 500S**



PART #: 2436-380

## VEHICLE COVERS

### TRAILERABLE COVER

Heavy-duty, 600-denier, solution-dyed polyester resists fading. Secures with a ratchet system to withstand trailering winds. Lined windshield area. Protective padding on vehicle contact points for added scratch protection. Fabric fitting allows room for additional installed accessories.

**FITS '20 - '23 500S**



PART #: 3436-031

# EV/EV IS



**TRACKER**  
OFF ROAD

## PACKAGES

### TRAIL KIT - 694893PKG

Kit includes cab components and front suspension armor to keep both rider and chassis protected when the road turns rugged.

**FITS '20 - '23 TRACKER EV**



**EV PLASTIC CANOPY**  
(682611)



**EV FULL WINDSHIELD**  
(682913)



**REARVIEW MIRROR**  
(651489)

### STARTER PACKAGE - 751384PKG

Our most popular adventure and recovery parts in one package to ensure the job gets done, day or night.

**FITS '20 - '23 TRACKER EV**



**CANOPY KIT**  
(668077)



**42-IN. DUAL ROW CURVED LED LIGHT BAR**  
(654073)



**WARN 4,000LB WINCH WIRE**  
(751267)



**FULL WINDSHIELD**  
(668486)

## ROOFS

### HARD TOP

Made from tough and durable HDPE. Protect yourself from the sun, rain, and other debris. Adds a sleek look to the vehicle.

**FITS '20 - '23 TRACKER EV**



PART #: 682611

## WINDSHIELDS

### FULL WINDSHIELD

Made of hard-coated polycarbonate. Provides complete protection and unobstructed vision. Easy installation.

**FITS '20 - '23 TRACKER EV**



PART #: 682913



### SPLIT WINDSHIELD

Made of hard-coated polycarbonate. Allows you to flip the windshield up for a full shield or down for half shield. Enjoy the option of added protection or increased airflow.

**FITS '20 - '23 TRACKER EV**



PART #: 682912

### SOFT CAB (FULL WINDSHIELD)

Tear- and UV-resistant canvas doors. Keep dirt and debris out of the cab while providing protection. Full windshield included.

**FITS '20 - '23 TRACKER EV**



PART #: 751321PKG

### DOORS & BUMPERS

#### SOFT DOOR KIT

Made of UV- and tear-resistant canvas with clear vinyl window for unobstructed sideways visibility. Compatible with the hard top.

**FITS '20 - '23 TRACKER EV**

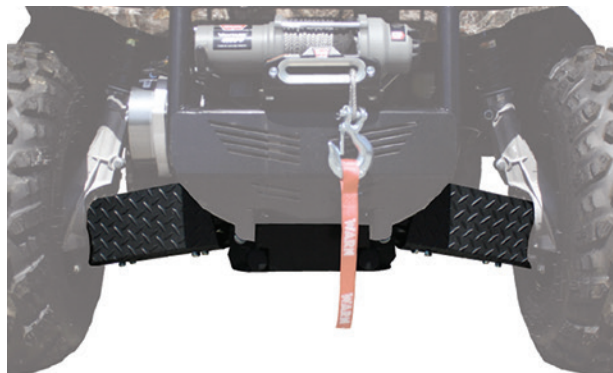


PART #: 671249

#### STICK STOPPER KIT

Protect your CVs with this Stick Stopper Kit. Keeps debris from the underbody, allowing for a cleaner, safer ride.

**FITS '20 - '23 TRACKER EV**



PART #: 639841

## HUNTING/CARGO STORAGE

### DUAL GUN MOUNT

Safely and securely transport most rifles and shotguns. Mounts vertically for safety and protection. Provides quick and easy access. Located close to the driver, on the seat kit.

**FITS '20 - '23 TRACKER EV**

PART #: 751276PKG

### HOOD RACK

Features tie-down mounts and a durable insert that keeps your gear from falling through. Requires minimal drilling.

**FITS '20 - '23 TRACKER EV**



PART #: 668487

## LIGHTING & INTERIOR

### 42-IN. DUAL ROW CURVED LED LIGHT BAR

The 240-watt, 42-in. dual-row LED light bar connects to the light bar mount. Offers a curved design and 2 different beam patterns. Has 19,200 raw lumens and 6,000K color temperature. Has a 10-30V DC input voltage. Must be used with the wiring harness.

**FITS '20 - '23 TRACKER EV**



PART #: 654073

### 22-IN. DUAL-ROW LED LIGHT BAR

The 120-watt, 22-in. dual-row LED light bar connects to the light bar mount. Offers 2 different beam patterns and 9,600 raw lumens. Has a 6,000K color temperature and a 10-30V DC input voltage. Must be used with the wiring harness.

**FITS '20 - '22 TRACKER EV**



PART #: 654072

### LIGHT BAR MOUNT (NO CANOPY)

Quick and easy installation. Allows for multiple light bar configurations. Kit includes light bar mount, brackets, necessary hardware, and instructions.

**FITS '20 - '23 TRACKER EV**

PART #: 669291

### REARVIEW MIRROR

Slightly convex to provide a wider angle for better vision. Rubber seal ball mount reduces vibration and allows for adjustability.

**FITS '20 - '23 TRACKER EV**



PART #: 651489

### SIDE-VIEW MIRROR

Features damage-resistant housing, durable steel clamps, and a breakaway design to deflect hits from stray objects.

**FITS '20 - '23 TRACKER EV**



PART #: 668490

# SVX1000

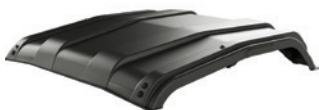


## PACKAGES

### TRAIL KIT - 3436-039

Give your cab protection from wind, rain, and sun for all-around adventure needs.

**FITS '20 SVX1000**



**HARD-TOP PLASTIC ROOF**  
1-PIECE (750832PKG)



**REAR POLYCARBONATE WINDOW** (2436-923)



**FULL POLYCARBONATE WINDSHIELD** (654883)



**REARVIEW MIRROR KIT** (651489)

## CABS

### HARD CAB - POLY WINDSHIELD

Protect from dust, wind, rain, snow and mud. Custom designed and built. Sliding windows and stylized vinyl finish on the doors. Single-point door latches for main door and extended cab for easy accessibility. Fully covers the extended cab for additional dry storage space. Includes full poly doors, poly rear window, full poly windshield and hard top.

**FITS '20 SVX1000**



PART #: 751169PKG



### HARD CAB - SPLIT WINDSHIELD

**FITS '20 SVX1000**

PART #: 751170PKG



### SOFT CAB - FULL WINDSHIELD

Tear- and UV-resistant canvas doors. Vinyl zipper windows easily roll up for extra ventilation. Keeps dirt and debris out of the cab while providing protection. Fully covers the extended cab for additional dry storage space.

**FITS '20 SVX1000**



PART #: 751319PKG



### SOFT CAB - GLASS WINDSHIELD

**FITS '20 SVX1000**

PART #: 751324PKG



### SOFT CAB - SPLIT WINDSHIELD

**FITS '20 SVX1000**

PART #: 751322PKG



## FULL POLY DOORS

Features automotive-style handles and sliding windows for increased ventilation. Includes the components to close out the extended cab for additional dry storage.

**FITS '20 SVX1000**



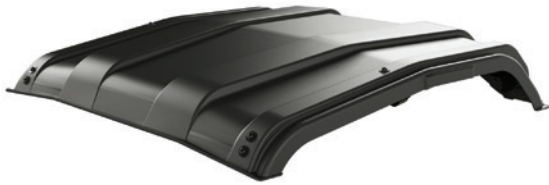
PART #: 695359

## ROOFS

### HARD TOP

Made from tough and durable HDPE. Protect yourself from the sun, rain and other debris. Adds a sleek look to the vehicle

**FITS '20 SVX1000**



PART #: 750832PKG



## WINDSHIELDS

### SPLIT WINDSHIELD

Made of hard-coated polycarbonate. Allows you to flip the windshield up for a full shield or down for a half shield. Enjoy the option of added protection or increased airflow.

**FITS '20 SVX1000**



PART #: 654886

## FULL WINDSHIELD

Made of hard-coated polycarbonate. Provides complete protection and unobstructed vision. Easy installation.

**FITS '20 SVX1000**



PART #: 654883

## POLY REAR WINDOW FOR HARD TOP

Made from polycarbonate material. Seamless integration with ROPS and hard top. Reduce the amount of wind, dust, and water inside the cab while maintaining clear rearward visibility.

**FITS '20 SVX1000**



PART #: 646423

## SOFT REAR WINDOW FOR HARD TOP

Made from UV- and tear-resistant canvas with clear vinyl center for unobstructed rearward visibility. Compatible with the hard top.

**FITS '20 SVX1000**



PART #: 671248

## BUMPERS

### TUBULAR REAR BUMPER

Protection for the back of your vehicle. Matches the front Tubular Brushguard. Quickly mounts to the bed frame.

**FITS '20 SVX1000**

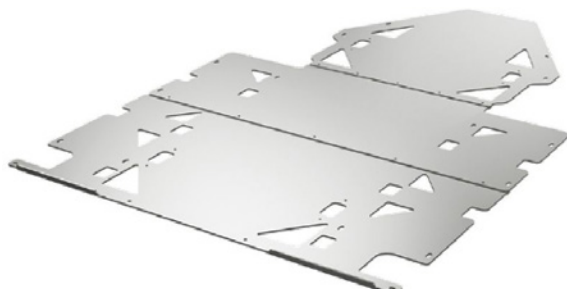


PART #: 668202

### MODULAR SKID PLATE

Protect the underbody of your vehicle. Made of heavy-duty 5052 aluminum. Comes in 4 pieces.

**FITS '20 SVX1000**



PART #: 658814

## WINCHES

### BOLT-IN FRONT RECEIVER

The 2-in. front receiver mounts to the front of the vehicle. Integrates with any 2-in. hitch. Works with all front brushguard options.

**FITS '20 SVX1000**



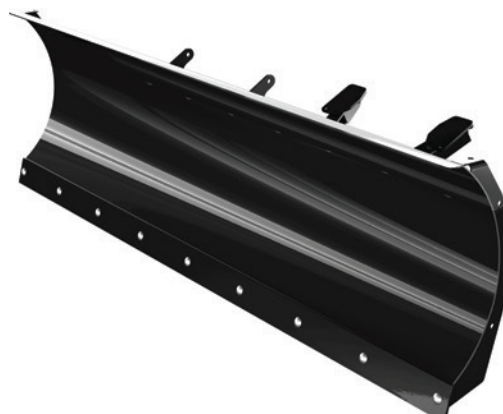
PART #: 750838PKG

## PLOWS

### 72-IN. STEEL PLOW

Includes 72-in. steel blade, push frame, mount and fairlead stiffener. Optimized moldboard curve creates increased snow-roll performance and allows for more efficient snow movement. Compatible with a variety of accessories for added ease of plowing. Stamped plow face adds increased rigidity to the face of the plow. No cutting or welding required, bolts up to existing frame. 5 easy adjustable blade angles via foot pedal. Quickly and easily lock the plow in place using the winch. Winch required.

**FITS '20 SVX1000**

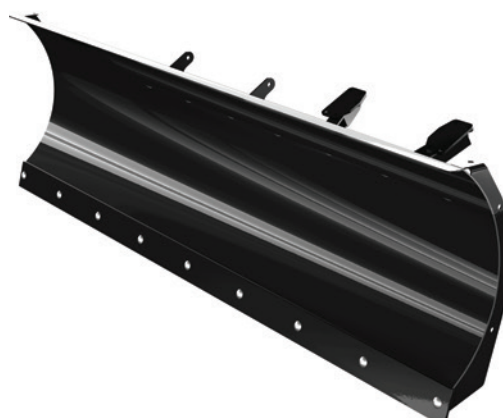


PART #: 751297PKG

### 72-IN. POLY PLOW

Includes 72-in. poly blade, push frame, mount and fairlead stiffener. Tough, slippery, lightweight construction from high-density polyethylene skin, over a steel tube frame. 72-in. wide blade with a 20-in. overall height and adjustable skid plates. Compatible with a variety of accessories for added ease of plowing. No cutting or welding required, bolts up to existing frame. 5 adjustable blade angles via foot pedal. Quickly and easily lock the plow into place using the winch. Corrosion resistant.

**FITS '20 SVX1000**

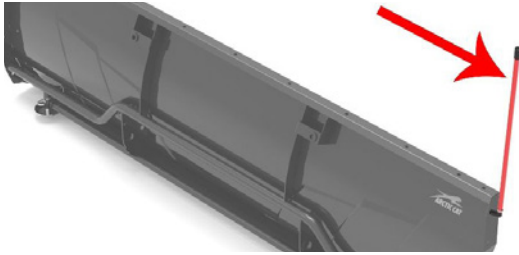


PART #: 751298PKG

## PLOW BLADE EDGE MARKERS

One-piece, zinc-plated forged-steel base offers added strength and longevity, and mounts to predetermined mounting location in blade. Increased visibility with the high-visibility PVC marker, allowing for precision handling of your plow system. Sold in pairs.

**FITS '20 SVX1000**



PART #: 2436-277

## 72-IN. PLOW BLADE STEEL WEAR BAR

Easy-install replacement steel wear bar.

**FITS '20 SVX1000**



PART #: 2436-318

## HUNTING

### BOW HOLDER

**FITS '20 SVX1000**



PART #: 667969

## CARGO STORAGE

### L-TRACK EXTENDED CAB

Mounts horizontally across the back of the extended cab. Hang bags and other gear to maximize space in the rear of your vehicle's extended cab. Includes hooks.

**FITS '20 SVX1000**



PART #: 750810PKG

### FUEL STORAGE

Fuel up with a 2-gallon fuel pack that mounts directly into the bed's Fast-N-Latch system. Comes with pack, latch and mounting bracket.

**FITS '20 SVX1000**



PART #: 750789PKG

### FUEL STORAGE CONTAINER

The 2-gallon RotopaX is thick and durable to prevent leaking. EPA and CARB-compliant.

**FITS '20 SVX1000**



PART #: 649254

## FUEL STORAGE LATCH

Used to connect Fuel Storage Container to Fast-N-Latch bracket.

**FITS '20 SVX1000**



PART #: 652471

## FUEL STORAGE LATCH EXTENSION

For use with 2 fuel storage containers back to back.

**FITS '20 SVX1000**

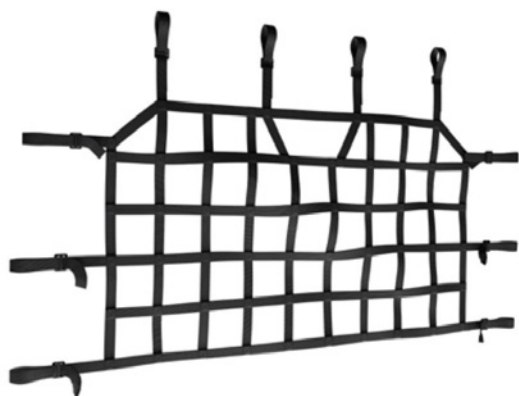


PART #: 653615

## HEADACHE NET

Creates a barrier between the cargo bed and the passengers to keep objects from interfering. Made from heavy-duty nylon straps. 12 mounting points, each with a buckle for quick and easy install. Minimal drilling required. Provides rear visibility and a racing feel with a weave design.

**FITS '20 SVX1000**



PART #: 658886

## REMOVABLE DRY BOX

Additional storage for your valuables. Black powder-coated dry box holder mounts underneath the dash for ease of access. Features a bungee strap to securely keep everything together. Locking clamps (3) ensure a tight seal so no water gets inside.

**FITS '20 SVX1000**



PART #: 750819PKG

## CARGO STORAGE

### SPARE TIRE MOUNT

Secure the spare tire directly into the bed using a 3-point ratchet strap and a Fast-N-Latch D-ring accessory. Kit includes spare tire strap, quick detach D-ring, Fast-N-Latch pin and instructions.

**FITS '20 SVX1000**



PART #: 664290

### FAST-N-LATCH TOOL

Use to install and remove all Fast-N-Latch accessories with just a quarter turn.

**FITS '20 SVX1000**



PART #: 654729



**INTERIOR CAB LIGHT**

**FITS '20 SVX1000**



PART #: 750823PKG

**42-IN. DUAL-ROW CURVED LED LIGHT BAR**

The 240-watt, 42-in. Dual-Row LED Light Bar connects to the light bar mount. Offers a curved design and 2 different beam patterns. 19,200 raw lumens and 6,000K color temperature. 10-30V DC input voltage. Must be used with the wiring harness.

**FITS '20 SVX1000**



PART #: 654073

**22-IN. DUAL-ROW LED LIGHT BAR**

**FITS '20 SVX1000**



PART #: 654072

**3-IN. DUAL-ROW LED LIGHT BAR SET**

**FITS '20 SVX1000**



PART #: 654076

**PLATE FLUSH MOUNTED LIGHT KIT**

**FITS '20 SVX1000**



PART #: 668259

**LIGHT BAR MOUNT**

**FITS '20 SVX1000**



PART #: 750816PKG

## INTERIOR

### CAB HEATER

Brave the cold weather with ease. 3 heat settings for optimal comfort. Heater vents (4) seamlessly integrate into the existing vehicle dash. Heat exchange utilizes vehicle's radiator system.

**FITS '20 SVX1000**



PART #: 663124

### REARVIEW MIRROR

Can mount to any 1.75-in. bar. Features damage-resistant housing, durable steel clamps and a breakaway design to deflect hits from stray objects.

**FITS '20 SVX1000**



PART #: 651489

### UNIVERSAL SIDE MIRROR

Slightly convex to provide a wider angle for better vision. Rubber seal ball mount reduces vibration and allows for adjustability. Quick and easy ROPS mounting requires no drilling.

**FITS '20 SVX1000**



PART #: 652450

# 570 & 700



## PACKAGES

### WINTER KIT - 66-IN. (WITHOUT WINCH) - 3436-072

Plow and push frame combined with handwarmers to ensure you hit the ground running on your next plow job.

FITS '20 - '21 570 & 700



STANDARD PLOW NEXT GEN  
(2436-534)



ATV 66-IN. BLADE SPEEDPLOW  
(2436-293)



DELUXE HANDWARMERS  
(1436-271)

### BACKCOUNTRY PACKAGE - 3436-105

Rugged tubular bumpers and hard guards to protect rider and machine when the brush gets thick.

FITS '20 - '21 570 & 700



FRONT BUMPER  
(2436-192)



REAR BUMPER  
(2436-504)



HAND GUARDS  
(10006559)

### ALL DAY KIT - 3436-126

Big storage capability with these expandable storage bags featuring hard lids and rugged snap buckles to keep things secure.

FITS '20 - '21 570 & 700 with Composite Rack



CENTER BAG - FRONT  
(2436-177)



SIDE BAGS  
(2436-184)



CENTER BAG - REAR  
(2436-185)

\*No haggle no hassle™ National Price. Prices, package quantities, specifications and materials may change without notice. For more information, visit [TRACKEROFFROAD.COM](http://TRACKEROFFROAD.COM).

**WINDSHIELDS****WINGUARD 2 TALL BLACK****FITS '20 - '21 570, 700**

PART #: 2436-987

**CYCRA M4 RECOIL HAND GUARDS**

Maximum coverage for increased hand protection. Removable Shield Cover for vented or non-vented riding conditions. Patent Pending Recoil Technology allows handguards to swing out. 6061 T-6 Aluminum Mount Brackets for added strength. Complete Racer Pack includes: Shields, Brackets & Hardware.

**FITS '20 - '21 570, 700**

PART #: 10006559

**BUMPERS****FRONT BUMPER**

Wide, steel box plate construction and durable, rustinhibiting black wrinkle paint provide style and protection. Easy installation. Plate construction provides easy mounting of accessory lights.

**FITS '20 - '21 570, 700**

PART #: 2436-192

**REAR BUMPER**

Custom designed for protection of rear frame, muffler, fenders and taillights. Durable, 1.5-in. dual-tube, powder-coated steel construction. 4-point mounting to the upper and lower frame for added strength.

**FITS '20 - '21 570, 700**

PART #: 3436-124

**A-ARM GUARDS - REAR**

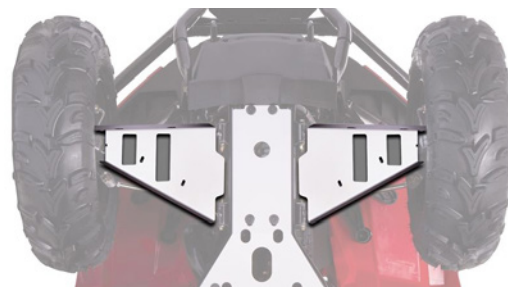
Easy to install and contoured specifically for TRACKER OFF ROAD™ ATVs. Offers full coverage protection for front and rear drive components. Made of highly durable 8-gauge 5052 aluminum. Aluminum provides greater protection against damage and corrosion.

**FITS '20 - '21 570, 700**

PART #: 2436-509

**A-ARM GUARDS - FRONT**

Easy to install and contoured specifically for TRACKER OFF ROAD™ ATVs. Offers full coverage protection for front and rear drive components. Made of highly durable 8-gauge 5052 aluminum. Aluminum provides greater protection against damage and corrosion.

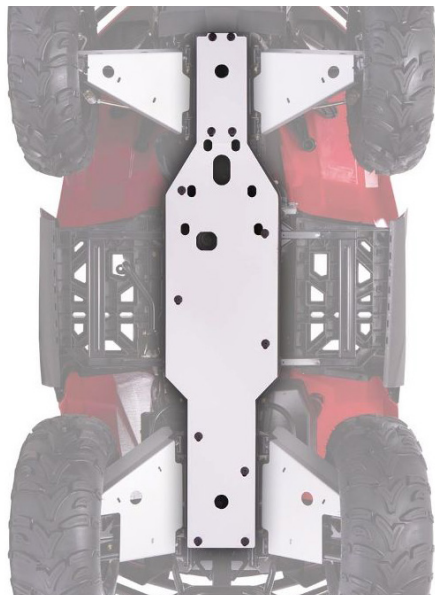
**FITS '20 - '21 570, 700**

PART #: 2436-882

## SKID PLATE KIT

Easy to install and contoured specifically for TRACKER OFF ROAD™ ATVs. Offers full coverage protection for front and rear drive components. Made of highly durable 8-gauge 5052 aluminum. Aluminum provides greater protection against damage and corrosion.

**FITS '20 - '21 570, 700**



PART #: 2436-510

## WINCHES

### WARN VRX 35 WINCH

**FITS '20 - '21 570 & 700**



PART #: 3436-114

### WARN VRX 35 WINCH MOUNTING KIT

**FITS '20 - '21 570 & 700**



PART #: 3436-115

## HAWSE FAIRLEAD

Double-coated Hawse Fairlead reduces rope wear and improves corrosion resistance

**FITS '20 - '21 570 & 700**



PART #: 2441-932

## STANDARD ROLLER FAIRLEAD

For use with TRACKER OFF ROAD 570 and 700EPS ATVs.

**FITS '20 - '21 570 & 700**



PART #: 0441-403

## PLOW ROLLER FAIRLEAD

Plow roller fairlead with larger diameter bottom roller for reduced rope stress

**FITS '20 - '21 570 & 700**



PART #: 2441-931

## WIRELESS REMOTE UPGRADE KIT- ALL VEHICLES

Easy plug-and-play installation. 50ft operation radius. Automatic system shut-off

**FITS '20 - '21 570 & 700**



PART #: 2436-110

## PLOWS

### STANDARD PLOW NEXT GEN PUSH FRAME & MOUNT KIT

Winch-assisted installation. Easy push frame release with a simple push of the foot. Convenient 5-position angle adjustment with the foot pedal design allows you to adjust the angle of your blade without bending over. Shear pin protection helps protect the plow system from damage when hitting a solid object. Powder-coated steel square-tube design provides optimal strength and durability. Rubber shock absorbers offer protection from over-angling and soften the impact during a shear pin break. Use with SPEEDPlow plow blades (2436-991, 2436-993, 2436-994, or 2436-995). Frame Mount Kit included. NOTE: 66-in. blades not recommended for 500cc or less.

**FITS '20 - '21 570 & 700**



PART #: 2436-534

### TIGERTRAX STANDARD PLOW NEXT GEN EXTENSION

Extends push frame to accommodate added height when tracks are installed. Directly bolts to Push Frame (2436-534). No drilling required. Fits standard plow Next Gen Push Frame.

**FITS '20 - '21 570 & 700**



PART #: 2436-535

### 66-IN. SPEEDPLOW STEEL PLOW BLADE - 17-IN. HEIGHT

Stamped steel plow face adds increased rigidity to the face of the plow. Use with ATV standard plow Next Gen Push Frame.

**FITS '20 - '21 570 & 700**



PART #: 2436-293

### 66-IN. SPEEDPLOW POLYETHYLENE PLOW BLADE - 17-IN. HEIGHT

Featuring a premium lightweight polyethylene blade face that offers long-lasting durability and sheds away snow. Use with ATV standard plow Next Gen Push Frame.

**FITS '20 - '21 570 & 700**



PART #: 2436-295

### 53-IN. SPEEDPLOW STEEL PLOW BLADE - 17-IN. HEIGHT

Stamped steel plow face adds increased rigidity to the face of the plow. Use with ATV standard plow Next Gen Push Frame.

**FITS '20 - '21 570 & 700**



PART #: 2436-294

## 53-IN. SPEEDPLOW POLYETHYLENE PLOW BLADE - 17-IN. HEIGHT

Featuring a premium lightweight polyethylene blade face that offers long-lasting durability and sheds away snow. Use with ATV standard plow Next Gen Push Frame.

**FITS '20 - '21 570 & 700**



PART #: 2436-294

## SPEEDPLOW UNIVERSAL EDGE MARKERS

One-piece, zinc-plated forged-steel base offers added strength and longevity, and mounts to predetermined mounting location in blade. Increased visibility with the high-visibility PVC marker, allowing for precision handling of your plow system. Sold in pairs.

**FITS ALL 53-IN & 66-IN PLOW BLADES**



PART #: 2436-277

## 66-IN. SPEEDPLOW STEEL WEAR BAR

Easy-install replacement steel wear bar

**FITS ALL 66-IN PLOW BLADES**



PART #: 2436-317

## 53-IN. SPEEDPLOW STEEL WEAR BAR

Easy-install replacement steel wear bar

**FITS ALL 53-IN. PLOW BLADES**



PART #: 2436-316

## MIRRORS

### DUAL MIRROR KIT

Lightweight, easy to install. Provides excellent dual rearview vision. Black powder coating for a long-lasting finish. Rustproof. Sold in Pairs.

**FITS '20 - '21 570 & 700**



PART #: 1436-510

### HANDLEBAR END MIRROR

Quick bar-end mounting on most ATVs. Does not interfere with hand movement. Vibration-free convex safety lens for ultraclear rearview vision. Sold individually.

**FITS '20 - '21 570 & 700**



PART #: 1436-507



## MIRROR

Compact, yet offers excellent rear view. Requires Mirror-Mounting Bracket (1436-700). NOTE: Will only work on 1 side.

**FITS '20 - '21 570 & 700**



PART #: 1436-702

## MIRROR-MOUNTING BRACKET

Use for mounting Mirror (1436-702).

**FITS '20 - '21 570 & 700**



PART #: 1436-700

## DUAL TOOL/GUN HOLDERS

Adjustable rubber-lined hooks offer scratch-free tool anchoring. Secure hook-and-loop fastener straps allow for versatility. Universal mount for both front and rear tube-style racks. Sold in pairs.

**FITS '20 - '21 570 & 700**



PART #: 0436-297

## COLD-WEATHER GEAR

### ATV TIRE CHAINS SIZE B

Gives maximum traction on snow and ice. Made from hardened steel with a grippy V-bar design. Easy-attach, secure, solid fit. Two sizes available. Sold in pairs. For use on rear tires only.

**FITS '20 - '21 570 & 700**



PART #: 0436-026

### ATV TIRE CHAINS SIZE C

Gives maximum traction on snow and ice. Made from hardened steel with a grippy V-bar design. Easy-attach, secure, solid fit. Two sizes available. Sold in pairs. For use on rear tires only.

**FITS '20 - '21 570 & 700**



PART #: 0436-027

## STANDARD HANDLEBAR/THUMB WARMERS

Offers all-day warmth to hands and thumbs. Easy-to-install kit with 3-position (high/low/off) toggle switch. Secure molded connectors and replacement grips. Requires Grip-It Glue (0441-510).

**FITS '20 - '21 570 & 700**



PART #: 3436-025

## GRIP-IT GLUE

Specially formulated for applying grips to recreational vehicles. Bonds up to 12 sets of grips. Required for handlebar grip installation.



**FITS '20 - '21 570 & 700**

PART #: 0441-510

## ENGINE BLOCK HEATER

Makes cold-weather starting smoother. Prewarms liquid-cooled engines with 375-watts of power. Incorporated thermal switch prevents overheating and is UL®- and CSA-approved.

**FITS '20 - '21 570 & 700**



PART #: 2436-663

## HANDLEBAR MUFFS

Water- and wind-resistant nylon outer. Easy-attach hook-and-loop fastener straps with an elastic grip strap. Sold in Pairs.

**FITS '20 - '21 570 & 700**



PART #: 2436-990

## VEHICLE COVERS

### TRAILERABLE COVER WITH WINDSHIELD

Protective, water-resistant, urethane-coated, 600-denier polyester. Secure, heavy-duty straps at front, center and rear. Fast, easy-to-use locking buckles. Fits with front and rear bumpers installed.

**FITS '20 - '21 570 & 700**



PART #: 3436-034

### TRAILERABLE COVER

Protective, water-resistant, urethane-coated, 600-denier polyester. Secure, heavy-duty straps at front, center and rear. Fast, easy-to-use locking buckles. Fits with front and rear bumpers installed.

**FITS '20 - '21 570 & 700**



PART #: 3436-033

## STORAGE COVER

Wards off sun, moisture and dust with urethane-coated, 150-denier polyester. Snug, custom fit from elastic stretch cords. Not for trailering.

**FITS '20 - '21 570 & 700**



PART #: 3436-032

## LICENSE PLATE KIT

Easy-attach aluminum plate kit with room for letters, numbers, and state ID. Powder-coated black base plate with opposite-colored letters and numbers included.

**FITS '20 - '21 570 & 700**



PART #: 2436-286

## ELECTRONICS

### LED HEADLIGHT BULBS

Philips Lumileds. 4,000 lumens per set. 6,000K color temperature. Copper weave heat sink for extended life. Adjustable positioning collar for optimal light output. Two-year limited warranty. Made in USA.

**FITS '20 - '21 570 & 700**

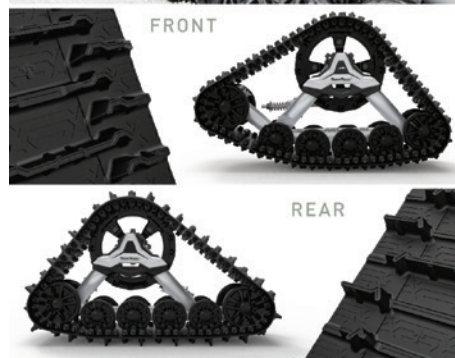


PART #: 2436-813

## TIGERTRAX

### ALL-SEASON ATV TRACK KIT

If you're looking for the next level in performance, the TRACKER OFF ROAD™ team has delivered! Building on the tried-and-true original TigerTrax system, we have brought you the next evolution in performance all-season tracks. Custom fit and optimized for your TRACKER OFF ROAD ATV, the TigerTrax 2 will take you farther and allow you to climb higher. It's the most terrain-capable, all-season ATV track system available today. Improved flotation, increased ground clearance, optimized frame geometry, aggressive track design and significant increase in ground traction will give you the edge in deep snow, sand, swamps, and the nastiest terrain. Simply stated, when there is terrain to be conquered and when you simply just need to get there, TigerTrax 2 will take you there. **NOTE: REQUIRES TRACK KIT AND MOUNT KIT, SOLD SEPARATELY.**



**FITS '20 - '21 570 & 700**

PART #: 3436-029

**T R A C K E R O F F R O A D . C O M**



©2023 TRACKER OFF ROAD, LLC. All rights reserved.  
Best efforts are used to ensure the accuracy of information shown,  
however, errors may sometimes occur. Information is subject to change without notice.